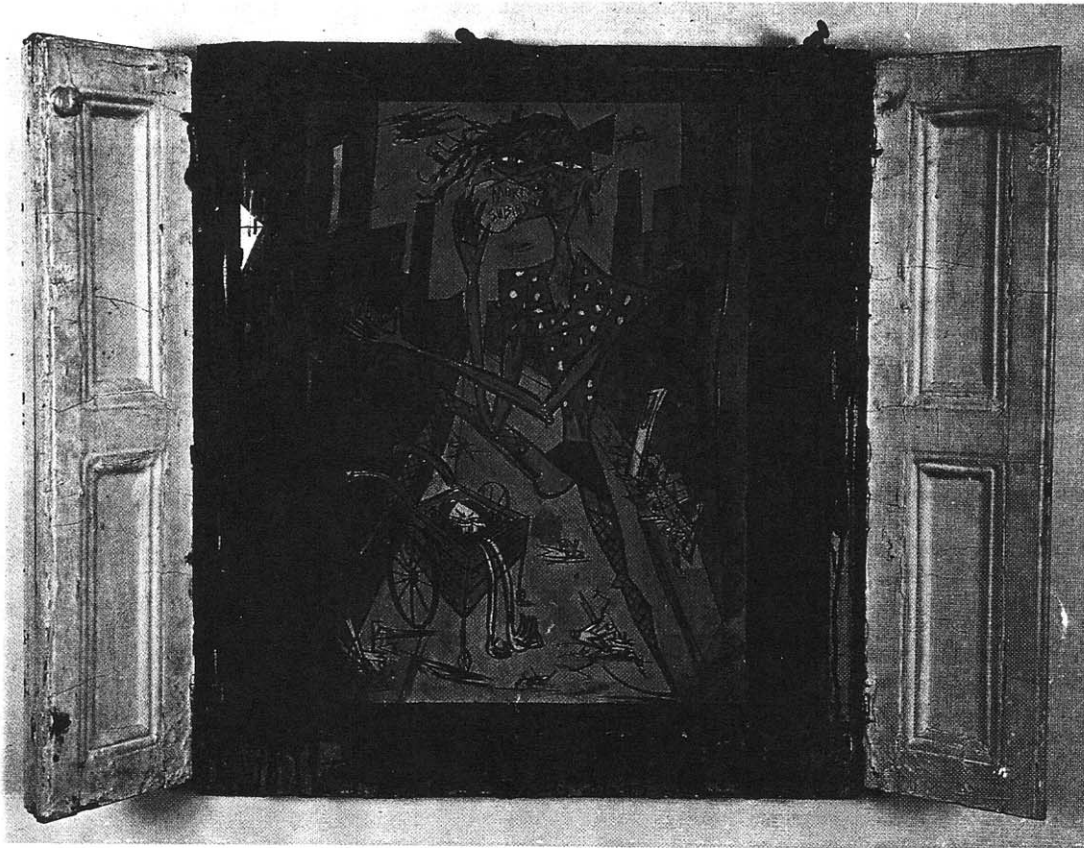


arts

MAGAZINE

Rick Prol, *Morte Subite*, 1985. *Gouache on paper with mixed media, 45 x 36"*. Courtesy Hal Bromm Gallery.



CITY STREETS

Rick Prol has nailed together wood torn from fences to frame painted cartoons of cats and other alley creatures, drawn in a jagged and slashing style that makes it clear that they merely animate the salvage. A less 1980s artist might have let the salvage be, without animation, but since at least the 1982 recession it has been necessary to reduce the threat implicit in jagged scrap to animated figures. In this Prol joins Francesco Clemente, among others.

(Hal Bromm,

September 3-29)